

Operating instructions



Indoor ventilation Passive air register with pollen filter

Please read carefully before installation

Nasta KS-86PR001FK

Body dimensions: 200mm square

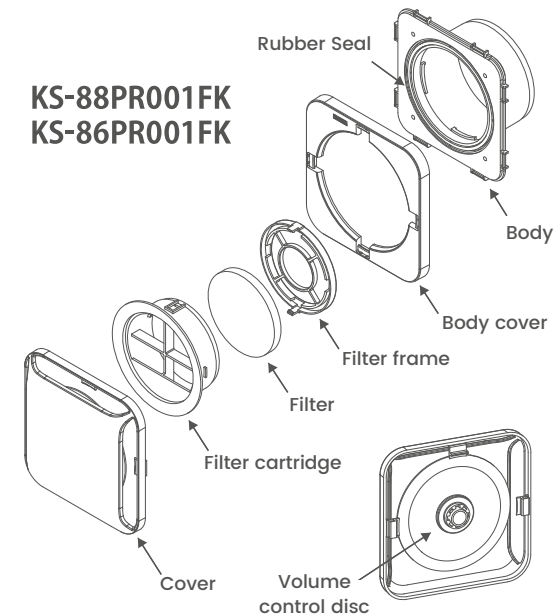
Compatible with 150mm duct



Features:

- **Wind direction control**
 - Freely change the orientation of the surface cover for comfort, and to protect against dust on curtains or furniture
- **Air volume adjustment**
 - By rotating the disk on the back side of the front cover, the air volume can be adjusted between Sealed, 1, or 2
 - Seal can be used to protect against strong/harsh winds, or when ventilation is not required - not for typical use

Parts List



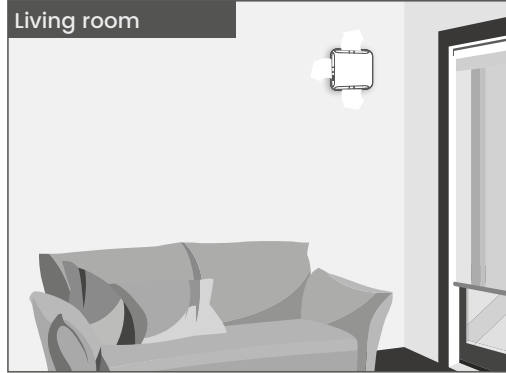
Please retain this manual

Manufactured by
Nasta Co, Ltd

www.universalfans.com.au

Changing the orientation

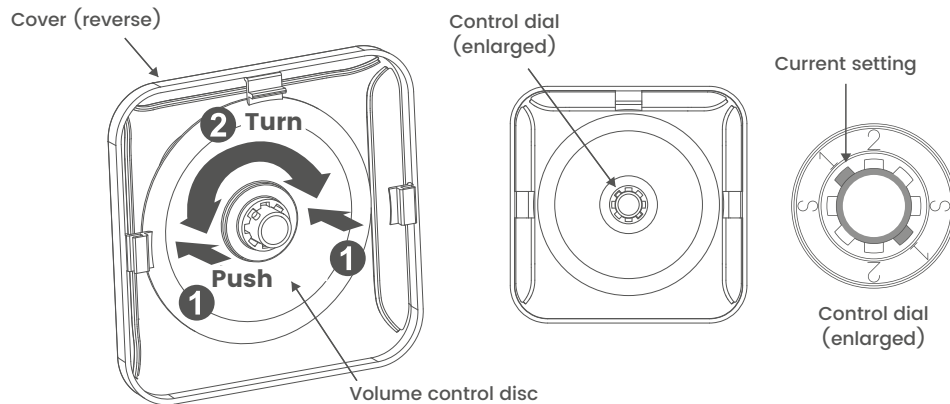
Depending on the environment (walls, ceilings, curtains, furniture etc.) the direction of the openings can be changed by removing and replacing the cover of the register



Adjusting the volume

The disc on the back of the cover allows you to control the amount of air allowed into the room:

- S Sealed
- 1 Level 1 - half
- 2 Level 2 - full



Care Instructions

How to clean the cover and body cover:

- Wipe off any dirt and dust with a soft cloth, and a neutral detergent (if required)
 - Do NOT use turpentine, benzene, acids, or alkaline cleaners such as bleach

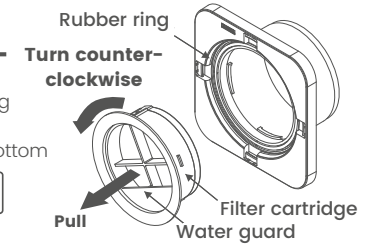
How to care for and replace the filter:

- Remove dust, and wash with water once every 3 months
- Replace every 6 months or as required

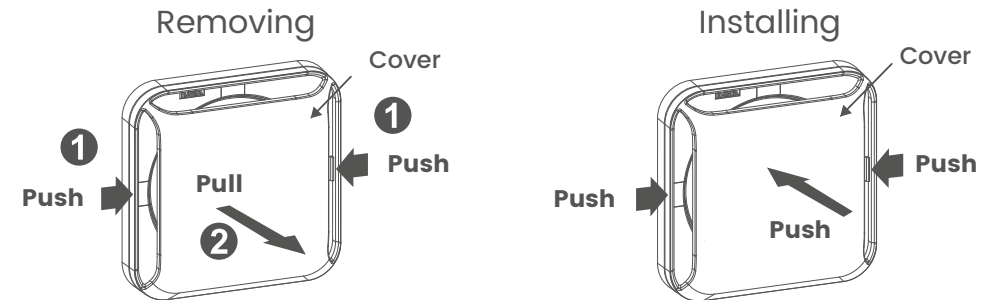
Cleaning and maintenance

1. Remove the cover
2. Remove the filter cartridge by pinching the arms of cartridge, rotating counter-clockwise, and pull gently
3. To replace, reverse the process ensuring the water guard is at the bottom

⚠ If the rubber ring is removed, reattach with firm side facing out



Removing and installing the cover



1. Push in the two opposite open sides of the cover
2. Pull lightly away from the body

To reattach the cover, perform these actions in reverse

Removing and installing the filter

The filter can be removed by lifting the clips on the top and bottom of the filter frame

Insert the filter into the back of the filter cartridge, with the firmer side facing the room
Insert the filter frame into the cartridge

